



2014-15 Domestic Incidents Summary

Scarborough



**Community Safety Partnership
January 2015**

Domestic Incidents Summary

The table below provides data on domestic incidents for the period 2014/15 to date. The data in the tables show statistics to date and comparative data for the same time period in previous years. The report provides data on domestic incidents that are classified by meeting on or more of the following criteria:

- a) Incident closing code is "PSW Domestic Incident"
- b) Incident with a Domestic 174 or 253 form attached
- c) Where the victim/offender relationship is classified as 'family' or 'spouse/partner'
- d) The incident is classified as 'domestic' in the Hate Crime description
- e) The NICL closure code on the incident is "Domestic Abuse"

An incident is classified as a "repeat incident" when the victim is a victim within the previous 12 months.

Domestic Incidents Summary

Overall, the level of domestic incidents has increased by 0.9% (16 offences).

During the latest month, the level of domestic incidents has decreased this month by -17.7% (-41 offences).

Total Incidents	Apr	May	Jun	Jul	Aug	Sep	Oct	Nov	Dec	Jan	Feb	Mar	
2011/12	162	172	178	163	176	161	131	123	125	173	136	171	1871
2012/13	136	155	167	189	176	158	186	143	210	157	152	157	1986
2013/14	170	189	172	239	221	168	170	218	232	176	145	166	2266
2014/15	176	211	200	191	205	191	221	209	191	18			1813
	4%	12%	16%	-20%	-7%	14%	30%	-4%	-18%	-90%			0.9%

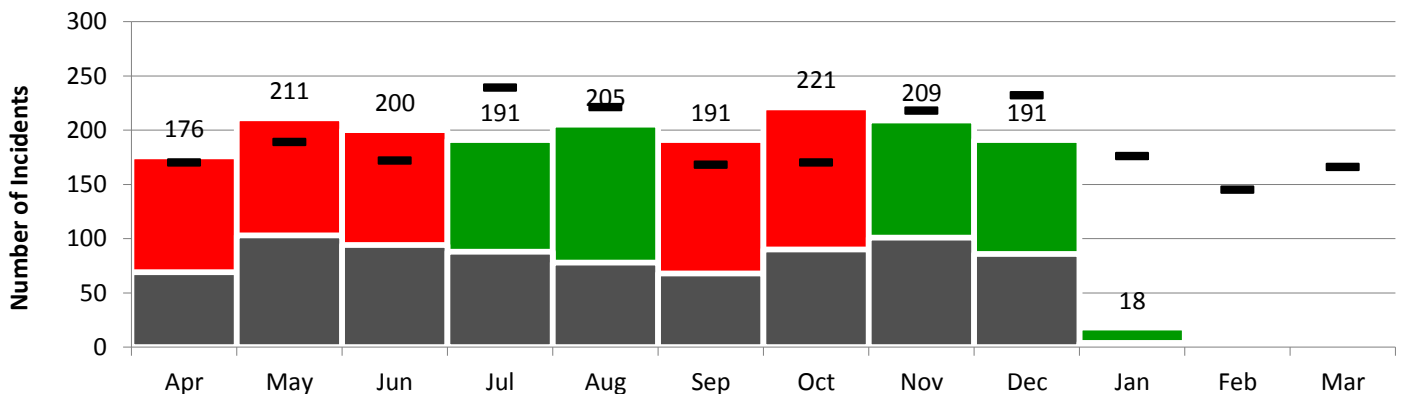
Repeat Incidents

Overall, the level of repeat domestic incidents is 43.1%.

During the latest month, the level of repeat domestic incidents is 45%.

Repeat Incidents	Apr	May	Jun	Jul	Aug	Sep	Oct	Nov	Dec	Jan	Feb	Mar	
2012/13	39%	44%	35%	48%	41%	36%	45%	39%	42%	44%	36%	37%	41%
2013/14	38%	39%	37%	40%	42%	45%	48%	42%	46%	44%	43%	43%	42%
2014/15	39%	49%	47%	46%	38%	36%	41%	48%	45%	22%			43%

The graph below shows the number of incidents each month for 2014-15 (red / green bars), and for the previous year (black lines). The number of repeat incidents for 2014-15 is also shown (grey bars).



Domestic Incidents Detailed Analysis

The table below provides more detailed analysis on domestic incidents for the period 2014/15 to date. The data in the tables show statistics to date and comparative data for the same time period in previous years.

Domestic Incidents Detailed Analysis

% Incidents	2012/13	2013/14	2014/15	By Month											
				Apr	May	Jun	Jul	Aug	Sep	Oct	Nov	Dec	Jan	Feb	Mar
Involving Arrest	23%	22%	24%	43	46	43	45	57	48	59	54	35	5		
Crimed	28%	27%	35%	62	65	63	62	72	69	85	78	65	6		
Children Present	15%	16%	20%	25	41	34	36	42	49	43	53	38	6		
Total Incidents	1520	1779	1795	176	211	200	191	205	191	221	209	191	18		

Domestic Incidents Detailed Analysis - Risk Status

% Incidents	2012/13	2013/14	2014/15	By Month											
				Apr	May	Jun	Jul	Aug	Sep	Oct	Nov	Dec	Jan	Feb	Mar
High Risk	0%	1%	4%	3	4	5	10	3	8	22	16	5			
Medium Risk	15%	18%	29%	62	67	61	55	60	50	50	59	52	1		
Standard Risk	17%	20%	39%	62	83	83	77	78	75	87	80	79	5		
Not Classified	69%	62%	28%	49	57	51	49	64	58	62	54	55	12		
Total Incidents	1520	1779	1795	176	211	200	191	205	191	221	209	191	18	0	0

High Risk Domestic Incidents Analysis

% Incidents	2012/13	2013/14	2014/15	By Month											
				Apr	May	Jun	Jul	Aug	Sep	Oct	Nov	Dec	Jan	Feb	Mar
Repeat	60%	28%	74%	3	3	4	8	2	5	13	14	4			
Involving Arrest	20%	17%	47%		3	2	3	1	3	13	9	2			
Crimed	20%	17%	46%		3	2	3	1	2	13	9	2			
Children Present		11%	25%		1	2	3		2	7	4				
High Risk	5	18	76	3	4	5	10	3	8	22	16	5	0	0	0

Domestic Incidents Detailed Analysis

The table below provides more detailed analysis on domestic incidents for the period 2014/15 to date. The data in the tables show statistics to date and comparative data for the same time period in previous years.

Domestic Incidents Temporal Analysis

% Incidents	2012/13	2013/14	2014/15	By Month											
				Apr	May	Jun	Jul	Aug	Sep	Oct	Nov	Dec	Jan	Feb	Mar
Monday	13%	14%	14%	23	27	30	21	26	33	32	28	23			
Tuesday	14%	14%	15%	31	34	28	31	21	27	30	35	27			
Wednesday	14%	11%	13%	23	21	25	27	24	24	26	25	34			
Thursday	14%	13%	13%	15	28	32	31	17	25	46	27	21	9		
Friday	13%	16%	14%	28	27	21	28	34	30	33	26	28	3		
Saturday	15%	15%	15%	26	46	24	24	41	27	24	33	33	1		
Sunday	17%	16%	16%	30	28	40	29	42	25	30	35	25	5		
Total Incidents	1520	1779	1795	176	211	200	191	205	191	221	209	191	18	0	0

% Incidents	2012/13	2013/14	2014/15	By Month											
				Apr	May	Jun	Jul	Aug	Sep	Oct	Nov	Dec	Jan	Feb	Mar
Day (6am - 6pm)	52%	54%	54%	95	113	103	109	120	100	118	98	113	11		
Night (6pm - 6am)	48%	46%	46%	81	98	97	82	85	91	103	111	78	7		
Total Incidents	1520	1779	1795	176	211	200	191	205	191	221	209	191	18	0	0

Domestic Incidents MARAC Statistics

The table below provides more detailed analysis on domestic incidents for the period 2014/15 to date. The data in the tables show statistics to date and comparative data for the same time period in previous years.

MARAC Statistics

No. of Cases	2012/13	2013/14	2014/15	By Month											
				Apr	May	Jun	Jul	Aug	Sep	Oct	Nov	Dec	Jan	Feb	Mar
Initial Cases	103	110	96	12	8	13	4	14	13	12	10	7	3		
Repeat Cases	13	12	16	2	2	4		2		1	2	2	1		
Total Cases	116	122	112	14	10	17	4	16	13	13	12	9	4		
% Repeat	11%	10%	14%	14%	20%	24%	0%	13%	0%	8%	17%	22%	25%		

Domestic Incidents by Ward

The table below provides data on domestic incidents for the period 2014/15 to date. The data in the tables show statistics to date and comparative data for the same time period in previous years.

	2011/12	2012/13	2013/14	2014/15	By Month											
					Apr	May	Jun	Jul	Aug	Sep	Oct	Nov	Dec	Jan	Feb	Mar
Castle	186	206	270	246	22	46	35	23	25	26	28	13	28	4		
Eastfield	142	175	197	198	26	13	28	30	11	18	15	24	33	4		
Woodlands	81	99	116	167	12	21	12	12	22	20	28	26	14	2		
North Bay	142	132	157	131	15	18	9	19	16	14	16	17	7			
Central	133	147	129	122	7	8	13	12	15	15	14	24	14	2		
Ramshill	62	73	105	116	10	17	12	13	18	13	12	9	12			
Falsgrave Park	92	80	97	99	6	16	8	15	12	5	12	12	13	1		
Filey	69	62	82	95	15	6	18	9	5	10	13	11	8			
Whitby West Cliff	40	69	85	81	7	7	17	10	12	8	9	6	5			
Streonshalh	57	58	70	79	8	5	6	7	14	8	12	11	8	3		
Stepney	46	55	63	72	3	4	4	10	5	11	7	14	14			
Northstead	57	47	70	62	3	7	12	7	5	4	8	11	5			
Cayton	33	34	33	59	8	8	2	5	9	10	9	4	4			
Hertford	43	42	67	53	6	7	5	3	9	7	9	4	3			
Newby	47	46	55	47	8	4	6	4	7	6	6	3	3			
Mayfield	26	29	41	28	4	4	3	3	2	3	3	2	4	1		
Derwent Valley	20	13	13	22	2	4	3		4	3	1	3	2			
Mulgrave	15	38	26	22	1	2	3	1	3			6	6			
Seamer	18	37	27	22	4	6	1		1	1	7	1	1			
Scalby, Hackness and Staintondale	10	16	12	19	4	3		1	2	3		4	2	1		
Weaponness	23	11	20	18	1	1		3		3	4	4	2			
Esk Valley	14	19	17	12	1	2	2		2		3		2			
Danby	1	6	3	7					3	1	2		1			
Lindhead	17	12	8	7		2	1	1	1	1	1					
Fylingdales	12	13	12	6	2			3			1					